

For barrier-free living spaces - the blaugelb door-stay with practical push-to-open function.



## blaugelb Door-Stay with push-to-open function

The barrier-free door-stay for mid-weight to heavy doors.

### Product features:

The blaugelb Door-Stay with push-to-open function is a door-stay designed for barrier-free access. The elegant stainless steel housing is equipped with a catch and an easy-to-use push-to-open function, allowing the door arrest to be released automatically using gentle pressure against the held door.

The stay is fitted directly to the floor using concealed screws, while the reciprocal part is fitted to the door leaf. Its compact dimensions mean that the blaugelb door-stay with push-to-open function can be used even in tight spaces.

- Suitable for barrier-reduced living
- Easy to operate using the push-to-open function
- Slim, compact design
- Elegant stainless steel housing
- Attached using concealed screws

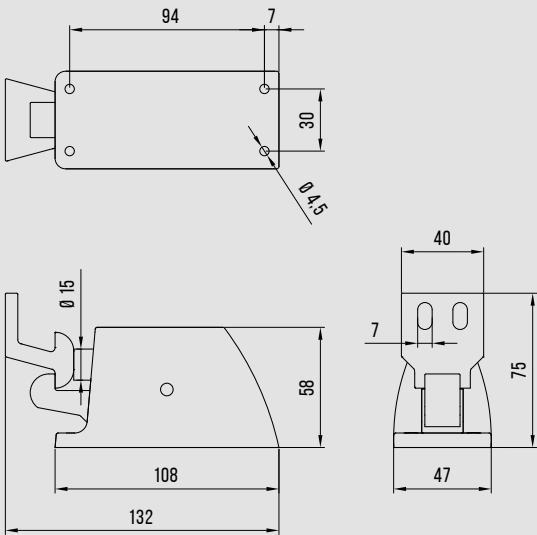


Product benefits:

- Suitable for barrier-reduced living
- Easy to operate using the push-to-open function
- Slim, compact design
- Elegant stainless steel housing
- Attached using concealed screws
- Jointly-supplied catch/locking clip similarly in stainless steel

Technical data:

Material:	Stainless steel
Surface:	Fine matt
Locking clip material:	Stainless steel
Dimensions (H x W x D):	58 x 132 x 75 mm
Door-stay attachment:	4 concealed screw-holes for floor mounting
Locking clip attachment:	2 screw-holes for mounting to door leaf
Scope of supply:	Door-stay, locking clip and mounting instructions



Product name	PU	Item no.
blaugelb Door-Stay with push-to-open function stainless steel	1 piece	9016812